

**AVR-2310
Setup Tool (0.0.16)
Manual**

DENON

Oct.29.2009

Table of contents

- 1 Instruction Manual
 - 1.1 Stand alone mode
 - 1.2 Communication mode
 - 1.2.1 Top Menu & System Setup
 - 1.2.2 Surround Parameter
 - 1.2.3 Load/Save Full Setup

1) Minimum hardware and software requirements:

| | |
|----------------------|--|
| Type | PC/AT compatible |
| CPU | Intel Pentium/P3 1GHz or faster |
| RAM | 256MB or more |
| Free hard disc space | 25MB or more |
| OS | Windows XP Home Edition / Professional SP2 or more |
| Display resolution | XGA (1024x768) or more. |
| Port. | RS-232C |
| Communication speed | 115,200bps |
| Connection Cable | D-sub 9Pin(male female), Straight |

2) Installation procedure

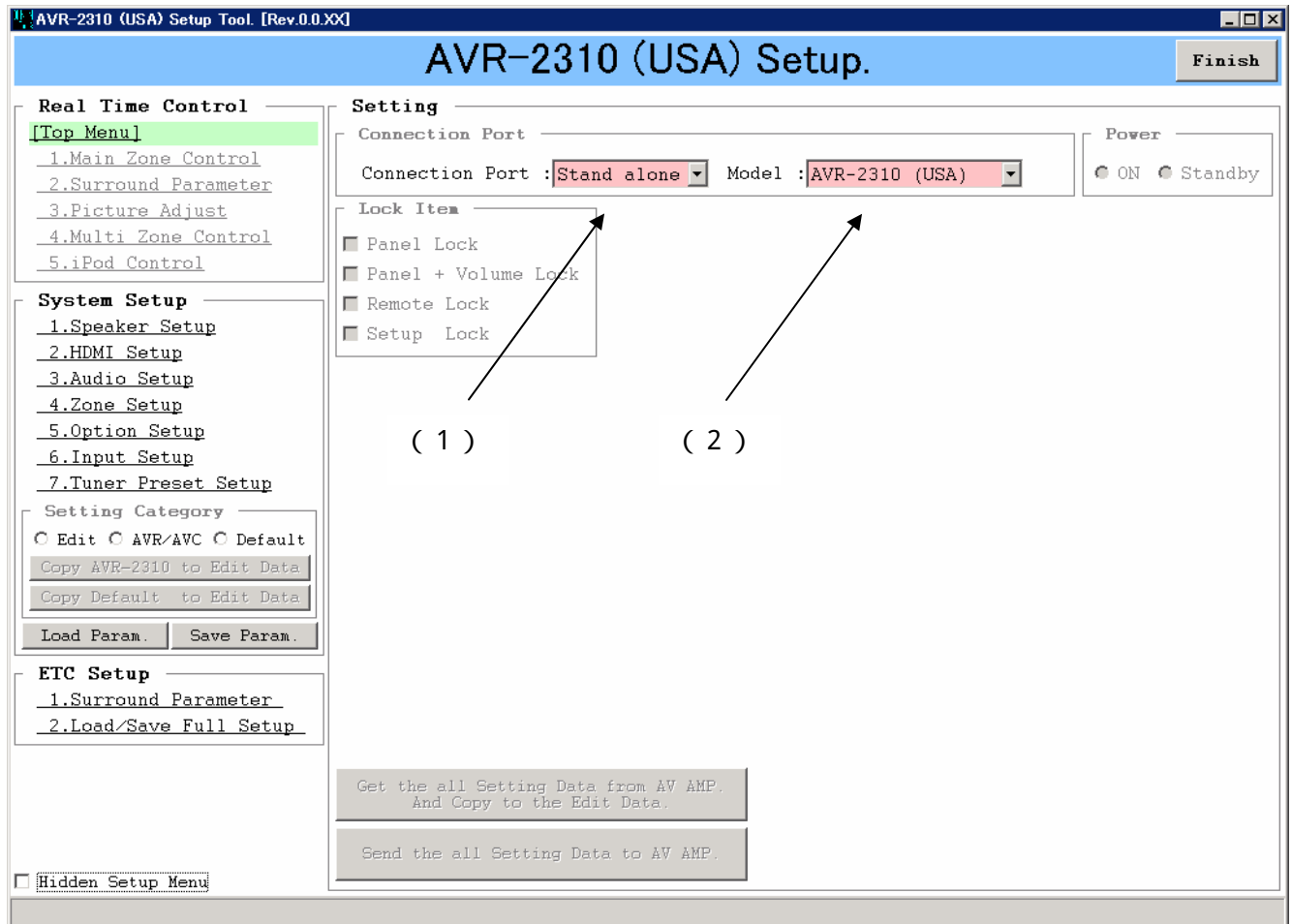
- a. Execute AVR2310_SystemSetup_0.0.16(for_Windows_XP).exe (= for Windows XP) or
AVR2310_SystemSetup_0.0.16(for_Windows_Vista).exe (= for Windows Vista)
(Install the AVR-2310 Setup Tool and necessary files)
- b. Execute AVR-2310 Setup Tool.
Ex. [Start] of Windows - [Program] - [AVR2310_SystemSetup]

1 Instruction

1.1 Stand alone mode

This mode enables the setting data concerning the product to be made with PC beforehand.

- (1) Select "Stand alone" by the connection port setting.
- (2) Select "Model name" by the Model setting.
- (3) Firmware update.
- (4) Select [System Setup] menu and set parameters.



Load Param. Button : The setup parameter can be loaded from the file in PC.

Save Param. Button : Edited setup parameter can be saved to the file.

[ETC Setup]-[Surround Parameter] : The surround mode and the parameter can be set to each input function.(see page6)

Hidden Setup Menu : When this item is checked, system setup can not operate.

NOTE

*[Real Time Control] cannot be used.

*[Load/Save Full Setup] of [ETC Setup] cannot be used.

*Channel level setting of [Speaker Setup (2)] and [Surround Parameter] may be over write the results of Auto setup.

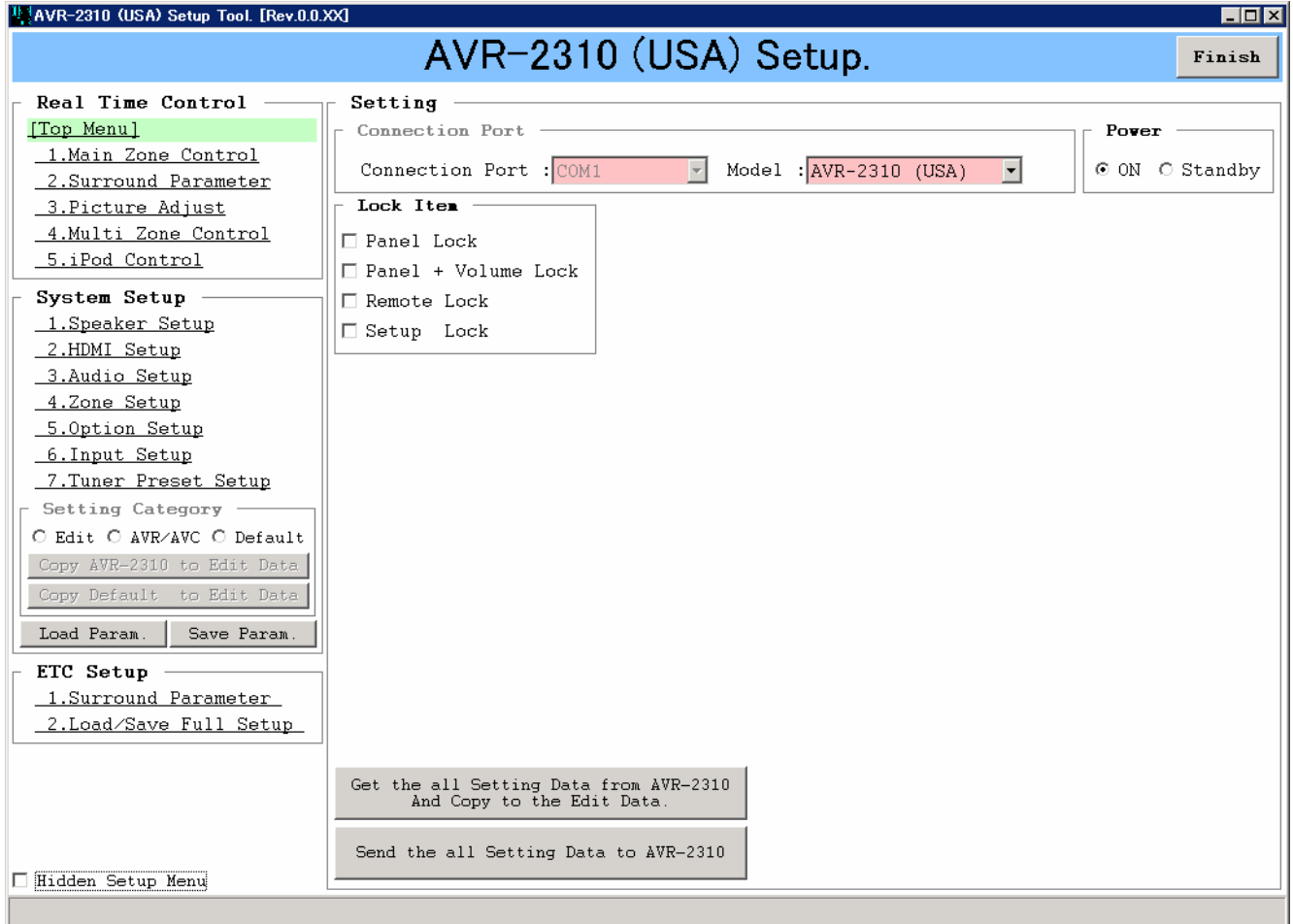
1.2 Communication mode

1.2.1 Top Menu & System Setup

This mode enables the control of the product from the PC via RS-232C cable.

(1) Select “COM 1-16” by the connection port setting.

(2) “Model name” is set automatically.



Get the all Setting Data from AVR-2310 and copy to the Edit Data Button

: All setup parameter of [System Setup] can be loaded from the AVR2310 connected via RS-232C, and then those parameters copy to the edit data.

Send the all Setting Data to AVR-2310 Button

: All edited setup parameter of [System Setup] can be set to the AVR2310 connected via RS-232C.

(3) Firmware update.

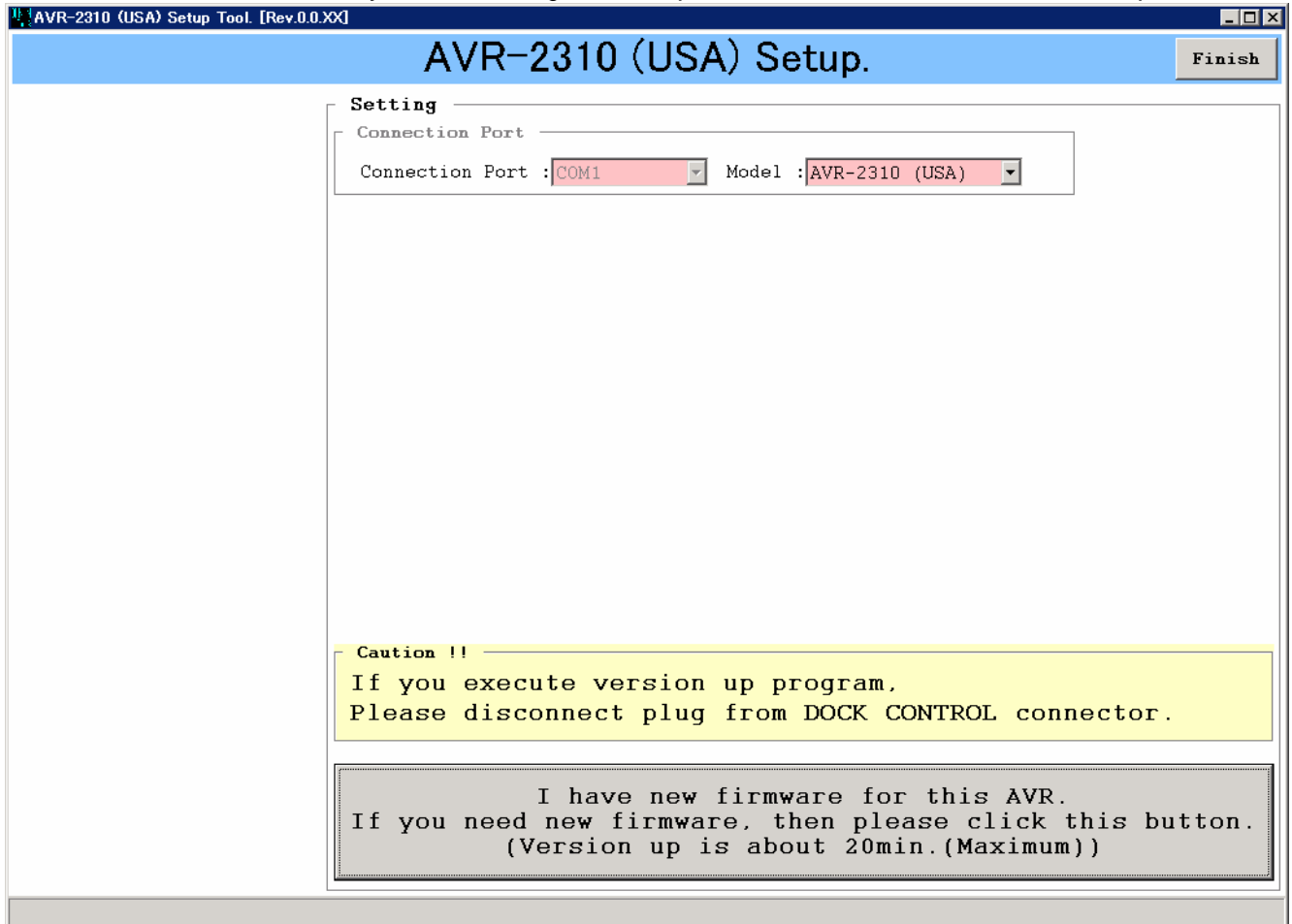
If the firmware of the product is older version for this setup tool, following window would be appeared at operation (2).

Click button (1) and update firmware of the product.

It takes about 20 minutes to update firmware.

Don't turn off the power for the product while updating firmware.

If you turn off the power for the product or unplug RS-232C cable while updating firmware, it may cause damage on the product. Please take care for this operation.



(1)

(4) Select [System Setup] menu and set parameters.

[Setting Category]

Edit : now editing. ,

AVR/AVC : setting data of the AVR2310 connected via RS-232C.(Not edit)

Default : Default setting. (Not edit)

Copy AVR-2310 to Edit Data Button

: Setup parameter on selected page can be loaded from the AVR2310 connected via RS-232C, and then those parameters copy to the edit data.

Copy Default to Edit Data Button

: Default setting data can be copied to the edit data of selected page.

Send the setup data on this page Button

: Edited setup parameter on selected page can be set to the AVR2310 connected via RS-232C.

1.2.2 Surround Parameter of ETC Setup

AVR-2310 (USA) Setup Tool. [Rev.0.0.XX]

AVR-2310 (USA) Setup.

Finish

Real Time Control

[Top Menu]

1.Main Zone Control

2.Surround Parameter

3.Picture Adjust

4.Multi Zone Control

5.iPod Control

System Setup

1.Speaker Setup

2.HDMI Setup

3.Audio Setup

4.Zone Setup

5.Option Setup

6.Input Setup

7.Tuner Preset Setup

Setting Category

Edit AVR/AVC Default

Copy AVR-2310 to Edit Data

Copy Default to Edit Data

Load Param. Save Param.

ETC Setup

1.Surround Parameter

2.Load/Save Full Setup

Surround Parameter Setup

Assign Surround Mode to Input Source

Zone : Main

Signal : Analog

Input Source : TUNER

Surround Mode : Stereo

Audyssey Param. to Input Source

OFF

Audyssey Parameter

Dynamic EQ

Reference Level Offset 0dB

Dynamic Volume

RESTORER

OFF

RESTORER 64

RESTORER 96

RESTORER HQ

Assign Surround Parameter to Surround Mode

Surround Mode: Stereo Standard Mode: Cinema EQ: ON OFF Room Size: Center Ing.:

Channel Volume

FL : 0.0 dB Dn Up SL : dB Dn Up

FR : 0.0 dB Dn Up SR : dB Dn Up

C : dB Dn Up SBL : dB Dn Up

SW : dB Dn Up SBR : dB Dn Up

FHL : dB Dn Up SB : dB Dn Up

FHR : dB Dn Up

Fader

Front Rear

Tone

Tone Control

Tone

Bass : 0 dB Dn Up

Treble : 0 dB Dn Up

Surround Back Channel Out

Surround Back Channel Out

Options

Panorama : ON OFF

Dimension :

Center Width :

SW: OFF ON Front Height: OFF ON

Delay Time: ms Dn Up Effect Level: dB

Load the Surround Parameter from File.

Save the Surround Parameter to File.

Load the Surround Parameter from File Button

: The surround parameter can be loaded from the file in PC.

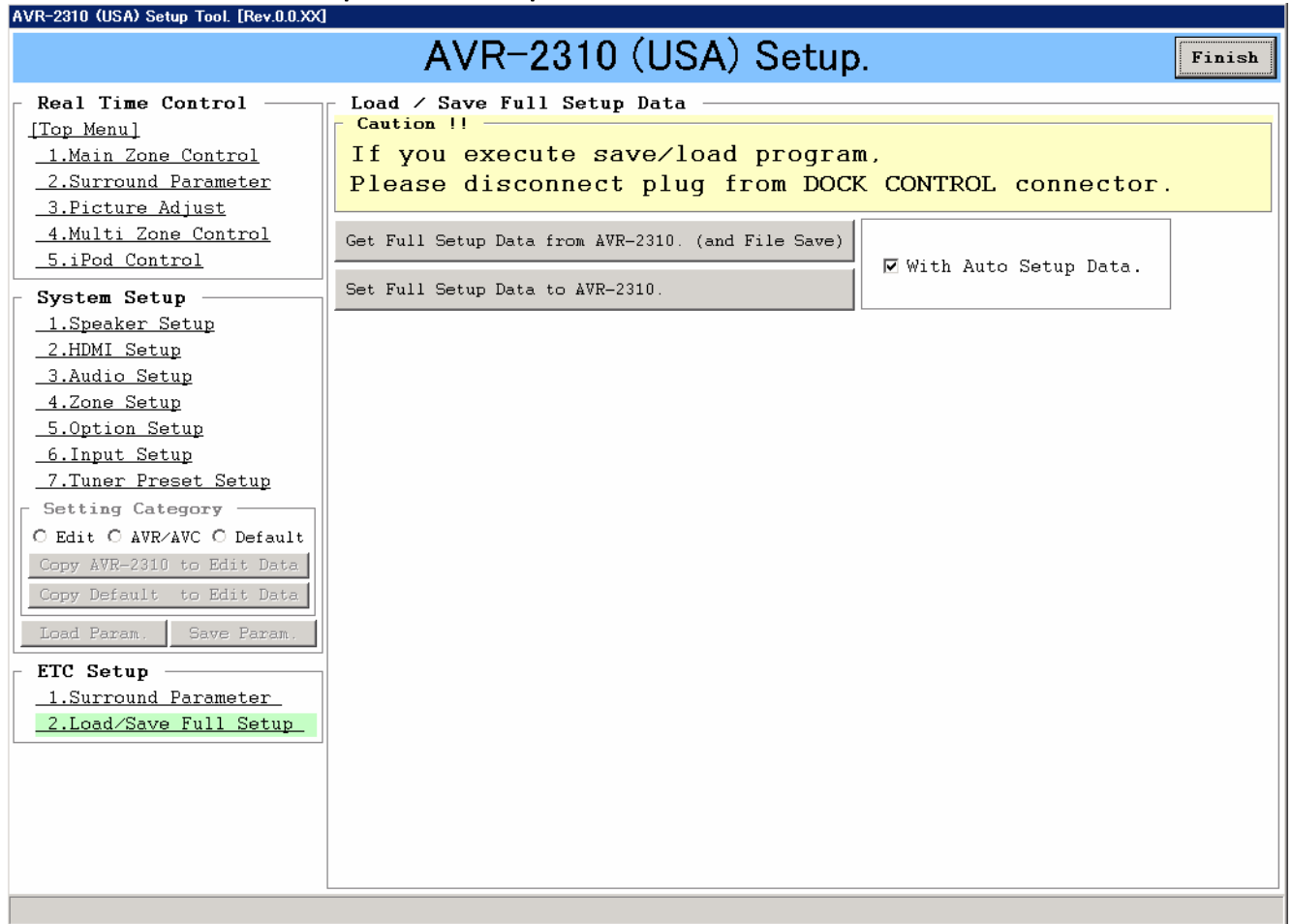
Save the Surround Parameter to File Button

: The edited surround parameter can be saved to the file.

Set the Surround Parameter to AVR-2310 Button

: Edited surround parameter can be set to the AVR2310 connected via RS-232C.

1.2.3 Load/Save Full Setup of ETC Setup



Get Full Setup Data from AVR-2310 (and File Save) Button

: All backup data can be loaded from the AVR2310 connected via RS-232C, and then those data can be saved to the PC.

Set Full Setup Data to AVR-2310 Button

: All backup data can be set to the AVR2310 connected via RS-232C.